

1.3 #26.

start with $\sin x$

period is 5.4

$\frac{2\pi}{b} = 3.4$ $d = 4.0$

$\frac{2\pi}{5.4} = b$ $a = 0.35$

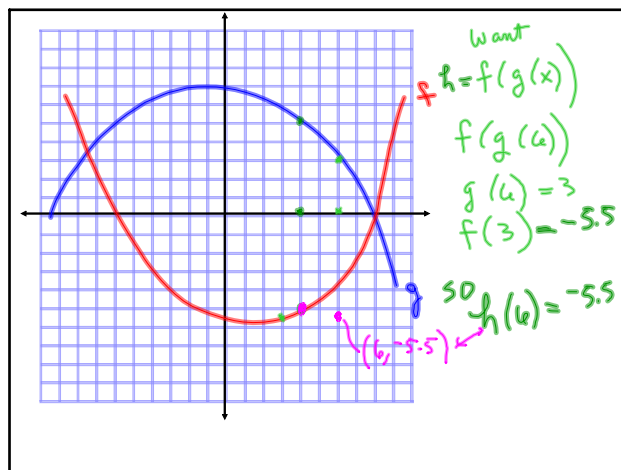
get $B(t) = 0.35 \sin\left(\frac{2\pi}{5.4}x\right) + 4.0$

recall:

$a \sin(b(x-c)) + d$

period is $\frac{2\pi}{b}$

Jan 21-10:35 AM



Jan 21-10:47 AM